

Shireland Collegiate Academy Trust and Lightwoods Primary Academy are proudly recognised as an Inclusive Attendance school. Our unwavering commitment to attendance centres around child-centric actions, evidence-informed practices, and a shared understanding of everyone's roles and collective responsibilities to promote exceptional attendance.

Our Trust-Wide Vision and Philosophy for Attendance

Every learner, every day, in school and thriving.

*At the heart of our Trust is a shared belief that **inclusive attendance** is fundamental to equity, wellbeing and achievement. We are committed to creating a culture where every child and young person feels safe, valued and supported to attend school regularly and engage fully in their learning journey.*

*Our approach is rooted in **compassion, recognition and partnership**. We understand that attendance is not just a statistic—it is a reflection of a child's experience and we respond with empathy, early support and strong relationships.*

We promote:

- ***Belonging and inclusion*** through trusted relationships and a recognition-based culture that celebrates effort, resilience and progress.
- ***High expectations*** for all students: to be present, prepared and engaged in every lesson, every day.
- ***Collaborative responsibility*** among schools, families and communities to remove barriers and ensure every learner can thrive.
- ***Holistic development***, recognising that regular attendance supports academic success, social growth, emotional wellbeing and lifelong opportunity.

Together, we commit to a Trust-wide ethos where attendance is everyone's responsibility—and every child is supported to succeed.

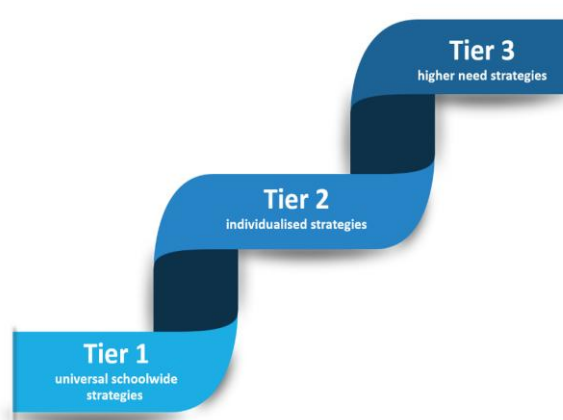
What is the Inclusive Attendance Development Model?

Our attendance approach is fundamentally guided by the Inclusive Attendance development model and covers 4 aspects of training and implementation.

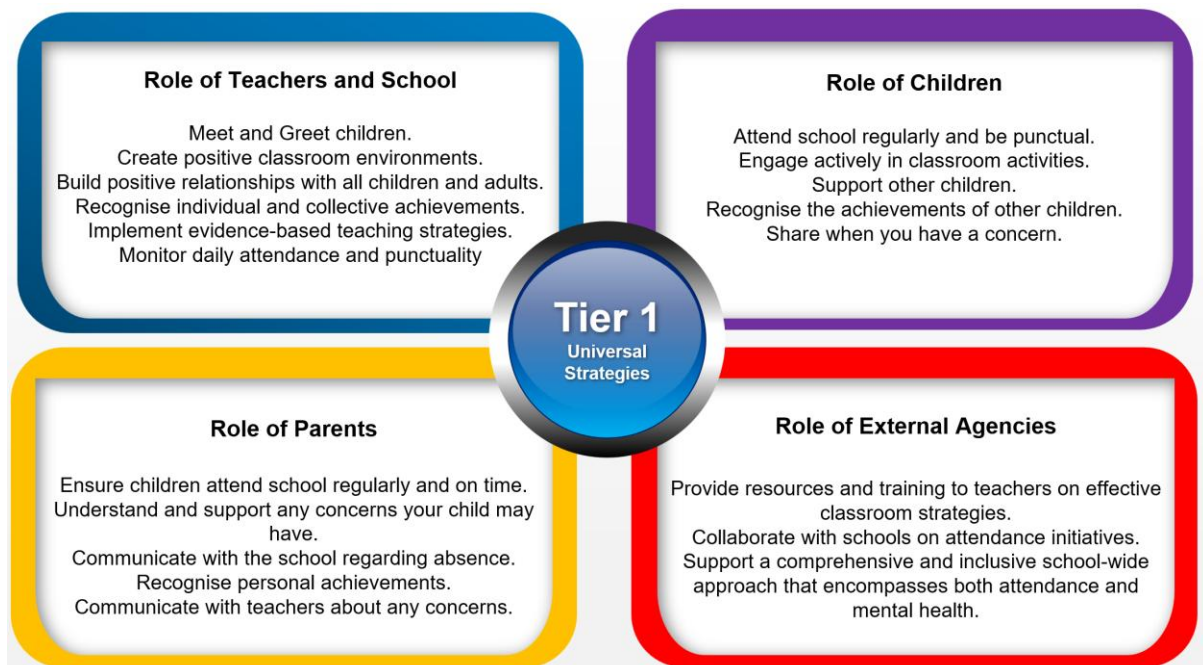


Multi-Tiered System of Support

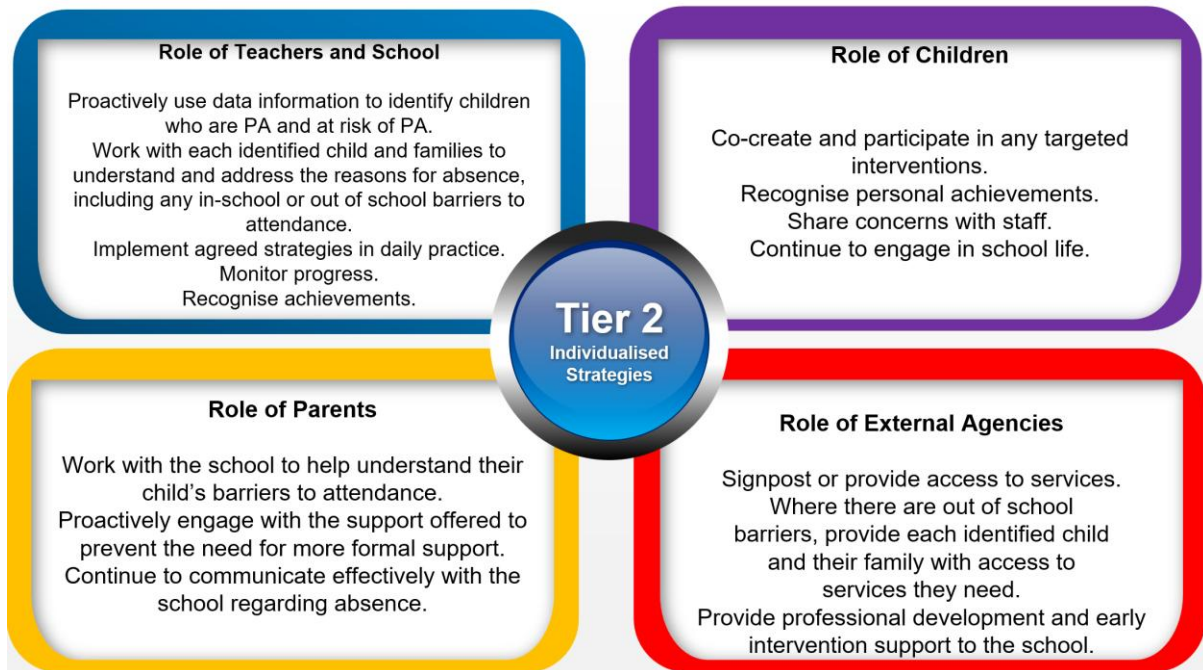
To guarantee a comprehensive approach to attendance, we implement a Multi-Tiered System of Support. A Multi-Tiered System of Support (MTSS) for school attendance involves three tiers of intervention, with roles for teachers, the school, children, parents, and external agencies – including the Local Authority. Data-driven decision-making and training requirements are pivotal to the implementation of the system. The system aligns with the Department for Education's (DFE) "Working Together to Improve School Attendance" guidelines.



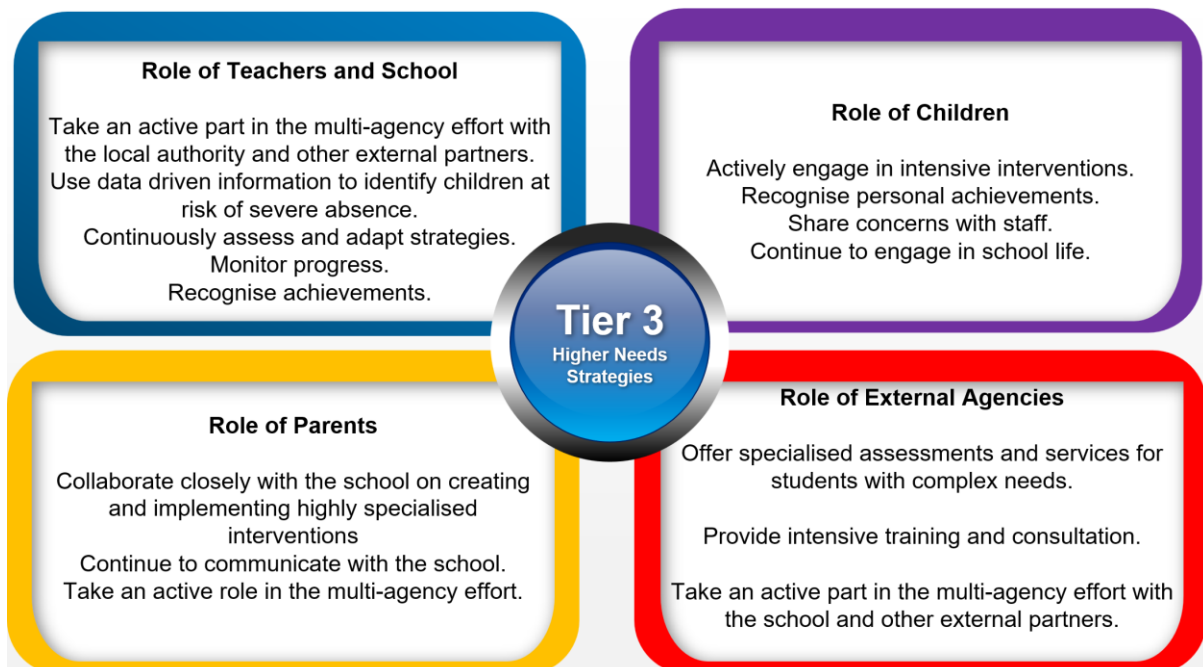
Tier 1 - Universal Approach: Establishing a baseline universal attendance approach that benefits all children.



Tier 2 - Individualised Strategies and Family / Early Help support: Tailoring strategies to individual needs and providing early help support for persistent attendance challenges.



Tier 3 - Higher Needs Strategies Support: Furnishing specialised support for children, young people, and families with complex attendance requirements, including access to external agency support when necessary.



Recognition-Based Approach

Our attendance philosophy is rooted in a recognition-based approach that recognises both personal and collective achievements. This approach serves to thwart isolation, prevent victimisation, cultivate positive environments, nurture relationships, foster inclusivity and ultimately cultivate intrinsic motivation among our children, families and staff.

The Importance of School Attendance

School attendance is not merely a requirement but a fundamental pillar of education. It plays a pivotal role in shaping academic success, personal growth, and future prospects, making it an indispensable aspect of any educational system.

- *Academic Achievement:* Regular attendance directly correlates with academic success. Children who attend school consistently are more likely to keep up with the curriculum, perform better in exams, and improve their life outcomes.
- *Knowledge Acquisition:* School is where children acquire knowledge and skills that are crucial for their personal and professional growth. Missing days means missing out on valuable learning opportunities.
- *Social Development:* School provides a vital social environment for children and adolescents to interact with peers, develop friendships, and learn essential social skills. Consistent attendance ensures children remain connected to their peer group.
- *Building Routine:* School attendance establishes a structured routine in children's lives, teaching them time management and responsibility, which are valuable life skills.
- *Teacher Interaction:* Regular attendance allows for meaningful teacher-child interactions. Teachers can provide personalised support, address questions, and assess individual progress more effectively when children attend regularly.
- *Preventing Knowledge Gaps:* Frequent absences can lead to significant knowledge gaps, making it challenging for children to catch up with missed lessons, potentially resulting in long-term academic struggles.
- *School Engagement:* Children who attend school regularly are more likely to engage in extracurricular activities, sports, and other enriching experiences that contribute to their overall development.
- *Legal and Parental Responsibility:* Parents or guardians are legally responsible for ensuring their child's regular school attendance. Failing to do so can lead to legal consequences.
- *Community Well-being:* High levels of school attendance contribute to the overall well-being of communities.