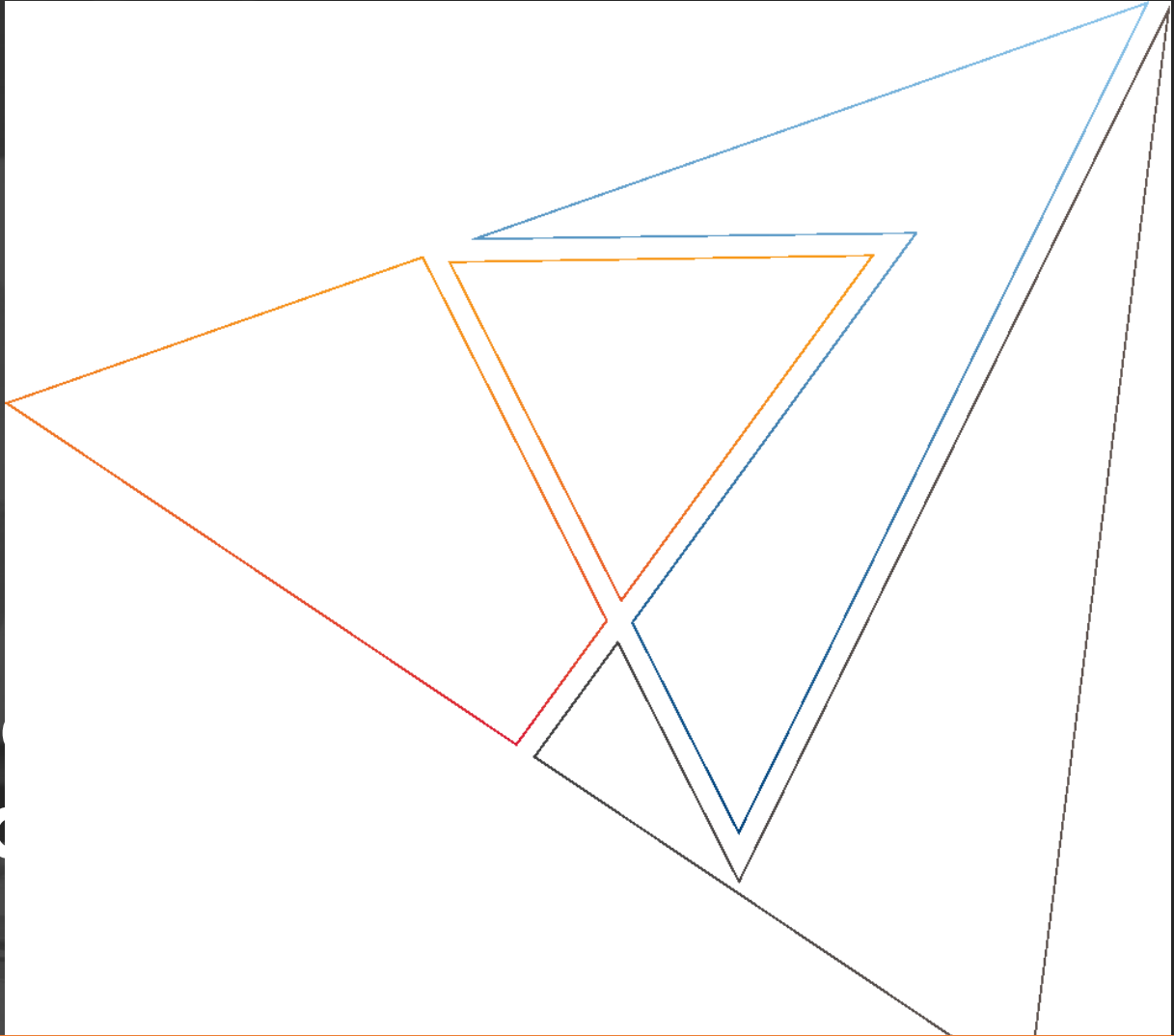




Lightwoods Primary Academy Shireland Collegiate Academy Family update



September 2021





LIGHTWOODS
PRIMARY ACADEMY

Welcome!

Rob Matthews - Principal

EXCITE
EXPLORE
EXCEL

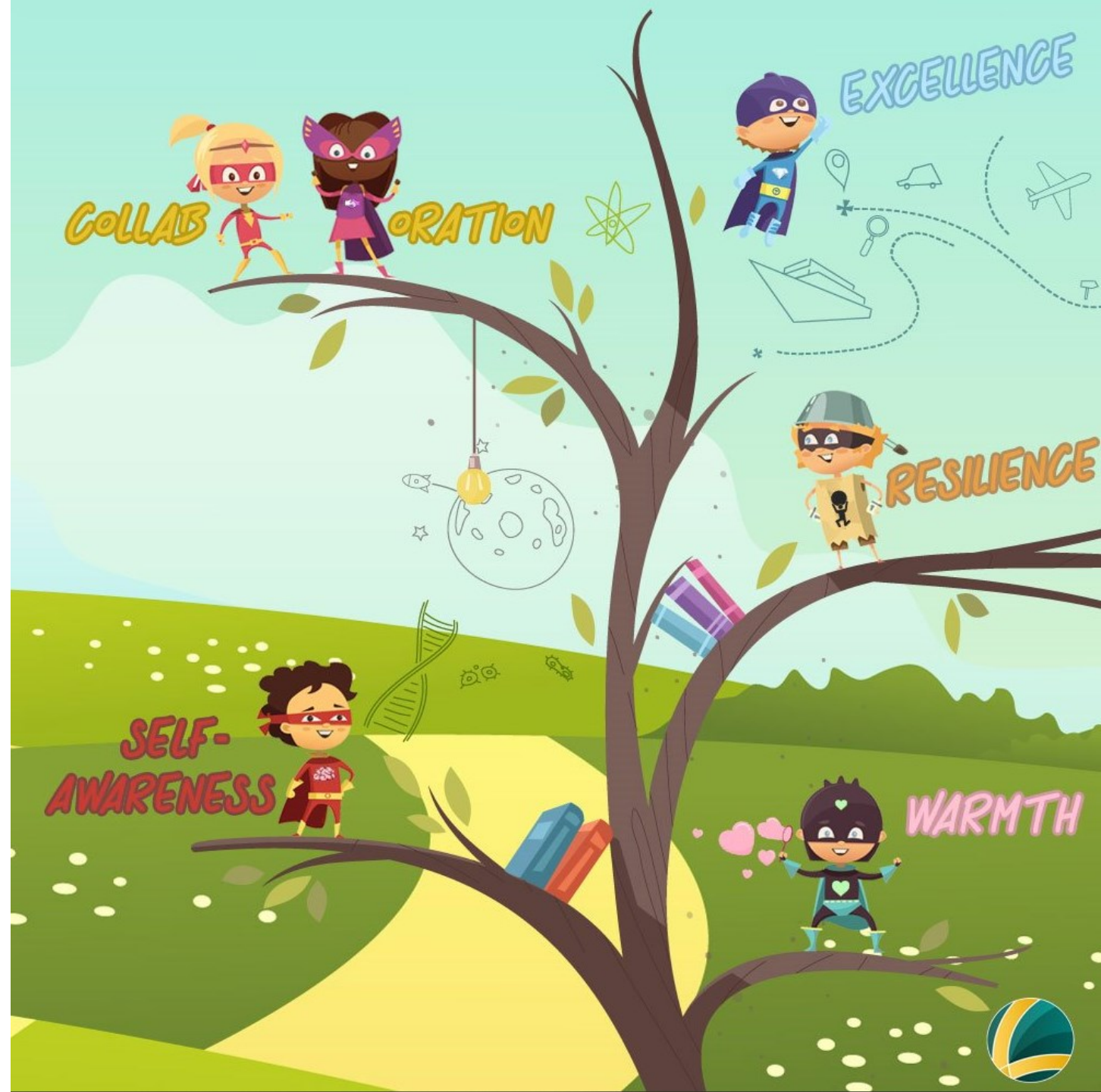


PROUDLY PART OF



What we are all about!

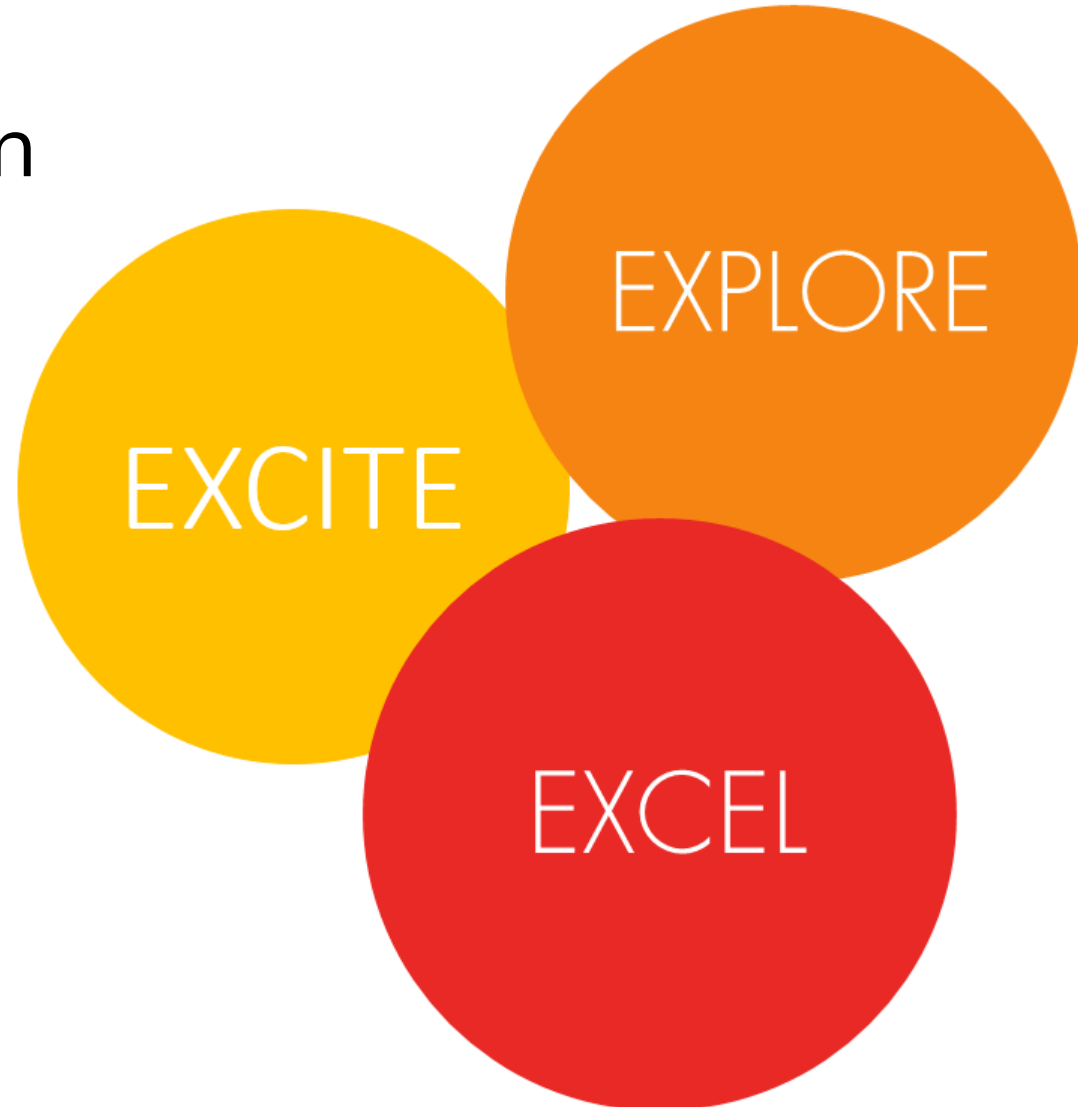
- Core values of the Trust
- What this means for parents



What we have done.

With Trust support, we have...

- Implemented an entirely new, fabulous curriculum for all children



What we have done

- Ofsted judged us as 'taking effective action'.

Since joining the school in January 2021, you have worked with pace to make improvements. You have shared a clear improvement plan with staff. Staff understand this plan and know what needs to be done to improve the school.

You have also received support from the multi-academy trust you intend to join. Trust leaders have provided effective training. This training is helping develop staff's knowledge of the features of an effective curriculum.

...your leaders have remodelled the school values. Despite the pandemic, you have made sure that pupils, staff and parents understand these values well.



What we have done

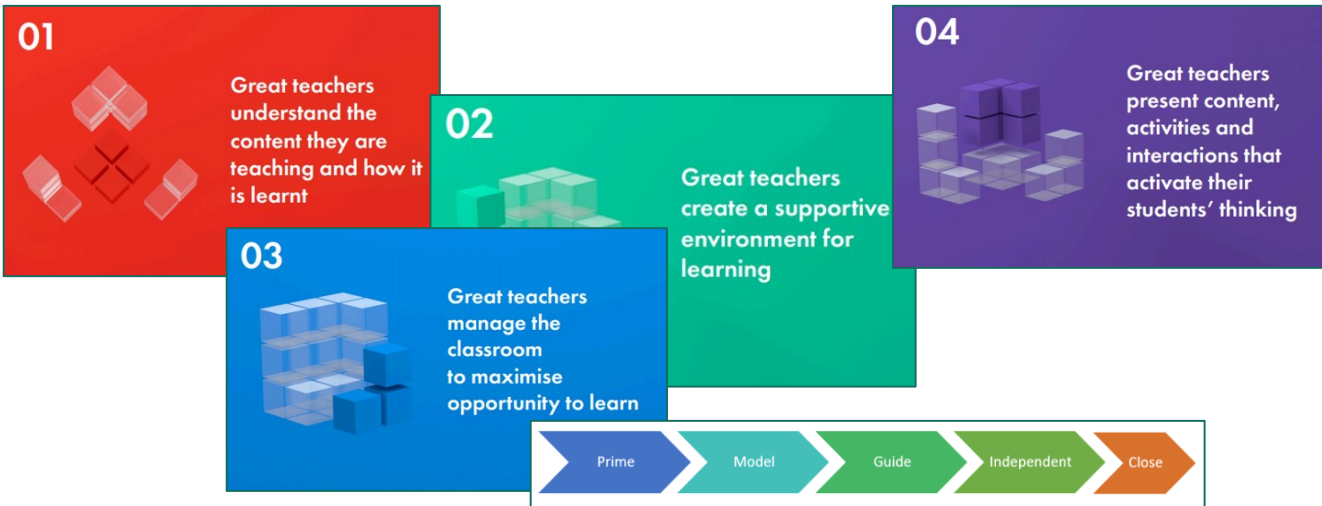
- Improved safeguarding.
- Cases now escalated and referred quickly and sharply.
 - Regular training
 - Focus on a culture of vigilance
 - Safeguarding part of every staff meeting
 - Leaders' trained regularly and up to date
 - Rob Matthews + Wendy Jackson – Safeguarding leads

Safeguarding is everyone's responsibility



What we have done

- Children at the heart of what we do
- Improving teaching and learning
- “QFT” – Quality First Teaching
- Professional development for all staff
- Raised accountability



Year 6

Blitz

History	Chronology, Historical Enquiry and Sources, Cause and Consequence
Science	Animals, inc Humans: Heart and Circulatory System
Design and Technology	Design Criteria, Food Preparation and Cooking
Geography	Location and maps, direction, human geography, similarities and differences, wider world, physical geography, environment
DT	Evaluate: Impact
History	Cause and Consequence, Historical Enquiry and Sources, significant

Iceberg Ahead

Year Five

Amazing Islands

Geography	Location and Maps, The Wider World, Similarities and Differences, Direction
Art	Colour, Painting
History	Significant Individuals, Events and Achievements, Chronology
Music	Appreciate and Understand
DT	Design Ideas
Science	Planets; Forces; Working Scientifically
Art	Other Techniques, Painting
History	Significance and Impact, Chronology, Historical Enquiry and Sources
Music	Improvise and Compose, Instruments, Notation
Design and Technology	Evaluating - Existing Products; Representing Design Ideas
Geography	Human Geography
Computing	Film Making

Galaxy Quest

PSHE	Living in the Wider World
Geography	Human Geography, Location and Maps
Computing	Digital Researching: Finding Information
Design and Technology	Representing Design Ideas, Tools

Zeus

Computing	Digital Programmer
Design and Technology	Materials
Art	3D Sculpture, Other Techniques, Evaluating and Appreciating, Drawing

Creepy Crawlies

Year Four

Romans

History	Chronology; Cause and Consequence; Historical Vocabulary; Similarities, Differences and Connections; Historical Enquiry and Sources
Geography	The Wider World, Environment
Computing	Digital Research: Finding Information
Art	Other Techniques
PSHE	Health and Wellbeing
Maths	Measure

Around the World

Geography	The Wider World; Similarities and Differences; Physical Geography
Art	Drawing; Evaluating and Appreciating; Other Techniques
Computing	Research and Information Literacy; Digital Communicator
Music	Appreciate and Understand
PSHE	Living in the Wider World

Crawlies

Technology	3D Sculpture, Other Techniques, Evaluating and Appreciating, Drawing
PSHE	Relationships

Worth Repeating

Art	Other techniques, Evaluating and Appreciating, Developing Ideas, Colour, Drawing, Painting, 3D Sculpture
Science	Living things and their habitats, Plants
Music	Rhythm, Notation
Maths	Geometry – Properties of shape, position and direction



Communication

- On the gate
- By email
- Talking to you at events such as this
- Trust wider enrichment opportunities
- Newsletters
- Open door policy (subject to Covid!)

Lightwoods - Newsletter 10 September 2021

LIGHTWOODS
PRIMARY ACADEMY

2021

Dates

Information for families:

Monday 15th September, 14:30, CASTLE ROAD

Monday 15th September, 18:00, CLENT ROAD

Monday 14th October 2021 - NHS child measurement program (reception and year 6)



Next steps

Our plans this term.

1. Implement a curriculum which is well planned, and sequenced and meets the needs of all learners.
2. Develop quality of strategic leadership so school is effectively led and managed at all levels.
3. Develop teaching approaches so that school practice is effective (QFT).





Welcome Back





Sir Mark Grundy
CEO
Shireland Collegiate
Academy Trust



Lady Kirsty Grundy
Primary Director
and Principal of Shireland
Technology Primary

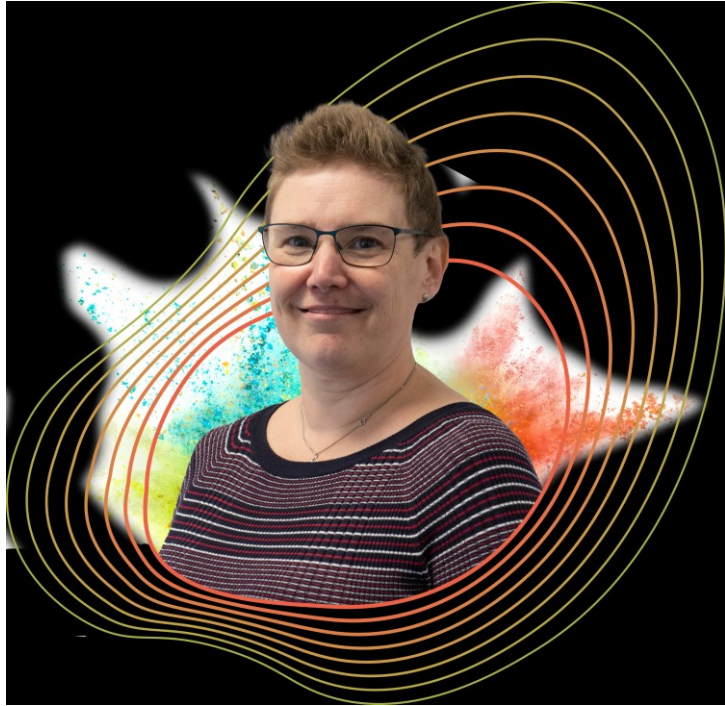


Jen Devaney
Deputy Primary
Lead



Andy Collins
Deputy Primary
Lead

Meet the Team



Rhianneth Highfield
Primary School Improvement



Claire Keeler
Early Years Trust Lead



Sian Cook
Primary School Improvement

Meet the Trust Team

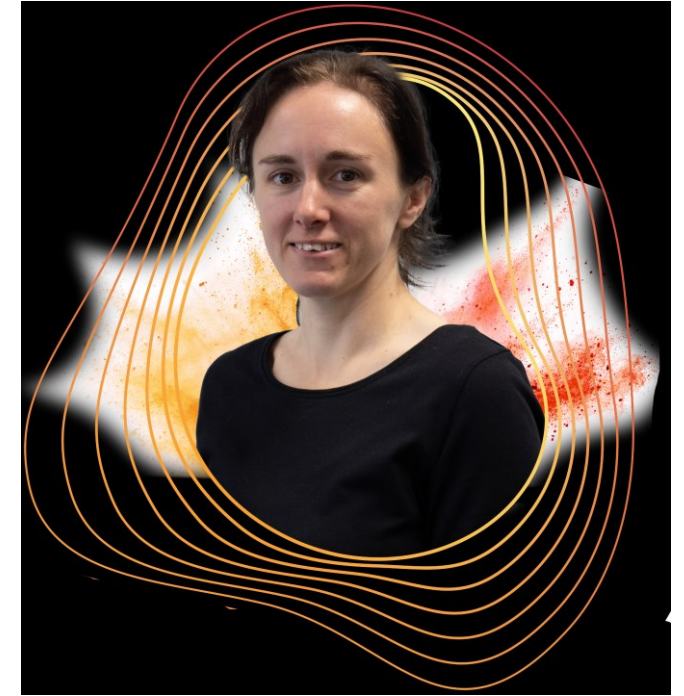




Haleema Yousaf
Children's Services Manager



Dan Donaldson
Enrichment Manager



Nicki Maglione
Communications Manager

Meet the Trust Team

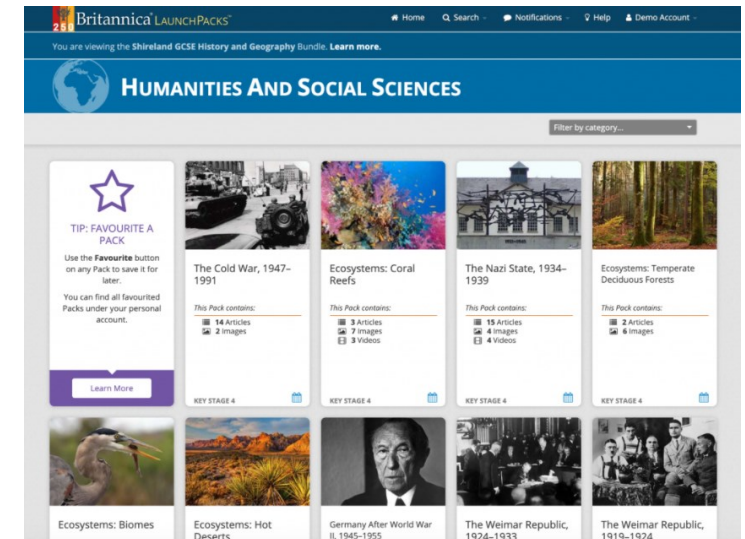
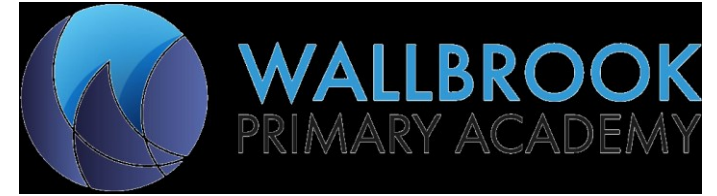


Our approach



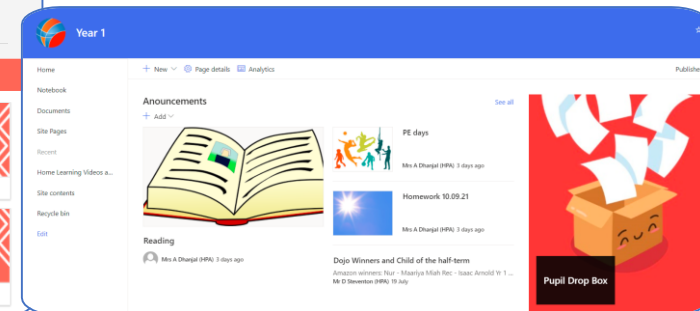
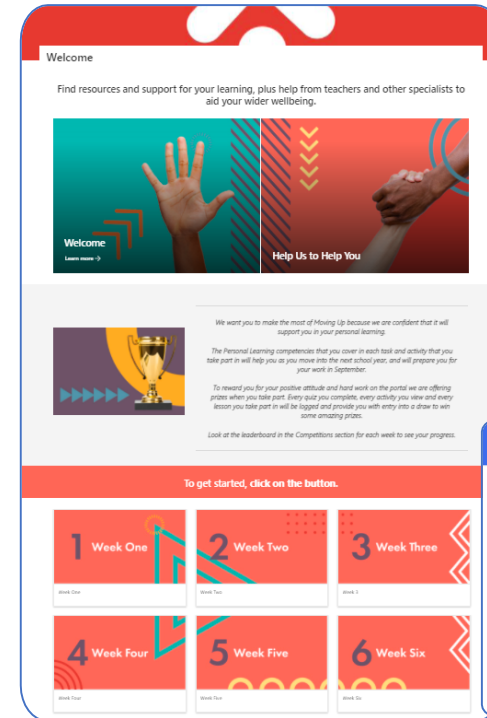
Looking back: 2020-2021

- **Two schools** joined the Trust
- Shireland Collegiate Academy Trust was **named as example of “transforming education”** by Secretary of State for Education, Rt. Hon. Gavin Williamson CBE MP, in his EducationFest Keynote speech In June.
- We purchased **over 640 supermarket vouchers** over October half term 2020 for those who usually receive free school meals when the government chose not to fund meal vouchers.
- Our GCSE resources that we devised with Encyclopedia Britannica, LaunchPacks, have been named as **2021 BETT Award winner** in the category of ‘Classroom aids for tools for learning, teaching and assessment’.



Remote Learning support

- **Over 100,000 live lessons** delivered through Microsoft Teams during the last academic year.
- **Over 452,000 visits to our online learning platform** 'Class Sites' since January 2021 lockdown.
- **451 quiz responses** in one month on 'Heads Up', our online summer learning platform for Year 7 students moving into Year 8.



A great start back!

- **Comprehensive training for teaching staff** on the Excite Explore Excel (E3L) curriculum
- An **'Amazing' Training Day** for teachers across all five Trust primary academies held in early September.
 - Focused on crafting great learning journeys and experiences
 - Delivered by world history author, lecturer and children's educational publisher **Chris Lloyd** and renowned education consultant **Professor Mick Waters**.

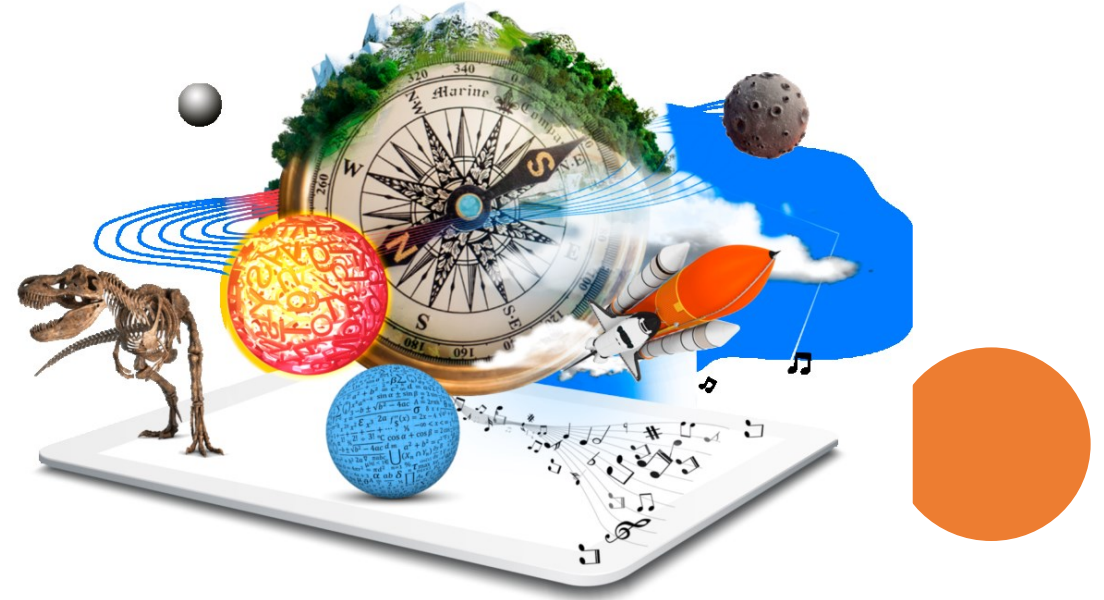


“IRRESISTIBLE LEARNING”



Eduu.school and E3L curriculum

- We have agreed to sell our Excite, Explore, Excel curriculum to Hodder, one of the top three publishers in the country.
- Hodder are now publishing our E3L curriculum as their primary offer to all the schools they support across the country.
- They have about 8,000 schools who use their curriculum.



Our curriculum is driven by our
School Values

EXCITE

EXPLORE

EXCEL



'Developing a genuine love of reading and writing'



Teaching rooted in high quality books



SHIRELAND
COLLEGIATE ACADEMY TRUST

Our Approach to English



Audience based and creative



Writing for a real purpose




Exciting and Real Experiences



What on Earth Books and Britannica Books



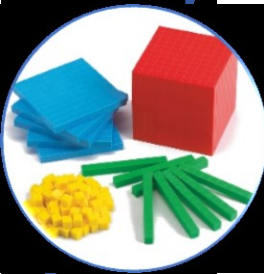
Our Approach to Mathematics



Develop fluency and deep understanding for all



Make rich connections and solve problems



Concrete and practical apparatus support understanding



Science

Shireland CAT value the Science curriculum and we approach our teaching of Science in a highly practical and investigative way.



Half-termly Science focus



Science focused E3L themes



Additional Science in E3L themes



Explore With Your Family... Home Learning Projects

STUNNING STRING ART

Sometimes, beautiful patterns are simply a numbers game.

Have a look at the different shapes around your home. A lot of them are geometric – made of points and lines. These squares, circles and triangles look pretty ordinary on their own, but they make dazzling designs when put together in a pattern.



WISE UP WORDS

- ➔ **ABSTRACT**
A type of art showing just colours, lines and shapes
- ➔ **ART DECO**
A popular art style in 1920s France
- ➔ **GEOMETRIC**
Using lines and shapes
- ➔ **MESOPOTAMIA**
An ancient part of Asia, where Iraq is now
- ➔ **MULTIPLES**
Times tables

POWERFUL PATTERNS

People have always loved finding patterns in art. Imagine travelling through history in a time machine. Whizzing back 3000 years to ancient Iraq, you'd find some amazingly old pottery with geometric patterns. On your way back, visit 1900s France during the Art Deco craze, where bold patterns were made using just lines. Watch out for world-famous artist Piet Mondrian – he could show you how to earn millions of pounds simply by slicing up rectangles and arranging them into a pattern!

Amazing patterns can be made by using simple shapes. Why not give it a go?



ULTIMATE INFLUENCERS:

PIET MONDRIAN

Piet Mondrian was famous for creating unusual abstract art. He used a mixture of different lines and shapes to make bold patterns. Look at this Mondrian painting – can you believe someone bought it for a whopping £32 million?!



➔ YOUR QUEST ←

Create your own string art! It is simple to do, but the results will dazzle you:

- ➔ Draw a circle of roughly 30cm diameter and divide it like a pizza.
- ➔ Poke some pins around the edge, about a finger's-width apart.
- ➔ Take a long piece of string and tie it around one of the pins.
- ➔ Loop the string around another pin and back down to the pin next to your first one. Continue the pattern and enjoy seeing your amazing artwork grow.



WHY NOT...

- ➔ Use different colours of string?
- ➔ Make new patterns by spreading the pinpoints further apart and closer together?
- ➔ Put a picture in the middle of your design and make it into a photo frame!

YOU WILL NEED:

- CARDBOARD
- PINS
- PENCIL
- COMPASS (OR A PLATE TO DRAW AROUND)
- RULER
- STRING

SUPER SPIROGRAPHS

What is your favourite toy? In the olden days, children loved playing the drawing game Spirograph. It was even named Toy of The Year! You fix a big circle to a piece of paper and then use a smaller circle with a pen attached to move around and create bright geometric patterns. Why not try it?



TRACKING TIME

Have you ever wondered why there are 60 seconds to a minute? The answer lies in ancient Mesopotamia. Without sundials or clocks, people made sense of time by working in 12s. They invented the 12-month calendar, the 24-hour day, and the 60-minute hour – all multiples of 12.

We still use this pattern to organise numbers and time. Just think about your times tables!

JUST FOR LAUGHS:

WHY DOES NOBODY TALK TO CIRCLES?

BECAUSE THERE IS NO POINT.



A STRING OF WONDER!

Why don't you show off your stunning geometrical creation to your family and friends? If you enjoy seeing patterns in shapes, you'll love Tetris, a tile-matching puzzle video game. You can play it for free online.





FOCUS
DAYS

Focus Days

Time to focus and become immersed

High quality, high value outcomes

Opportunities for a range of experiences and visits

Support from specialist teachers





MY CULTURAL
JOURNEY

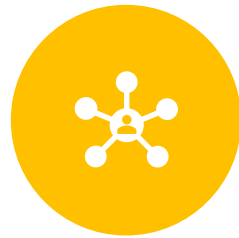
How it works



50 THINGS TO DO LIST IN EACH PHASE (KS1, LKS2, UKS2)



SUPPORTED BY A PORTFOLIO TO RECORD EACH EXPERIENCE AND COLLECT MOMENTOS



SOME ACTIVITIES FACILITATED THROUGH PASSPORT TO SUCCESS AND E3L CURRICULUM OFFERS



ACTIVITIES SIGNPOSTED THROUGH E3L HALF TERMLY HOME LEARNING PROJECTS



REWARD SCHEME TO ENCOURAGE PARTICIPATION – TERMLY REVIEW AND SPECIAL ASSEMBLY



Exceptional Teacher Programme

Staff Training and CPD



 SHIRELAND
COLLEGIATE ACADEMY TRUST



PASSPORT TO SUCCESS

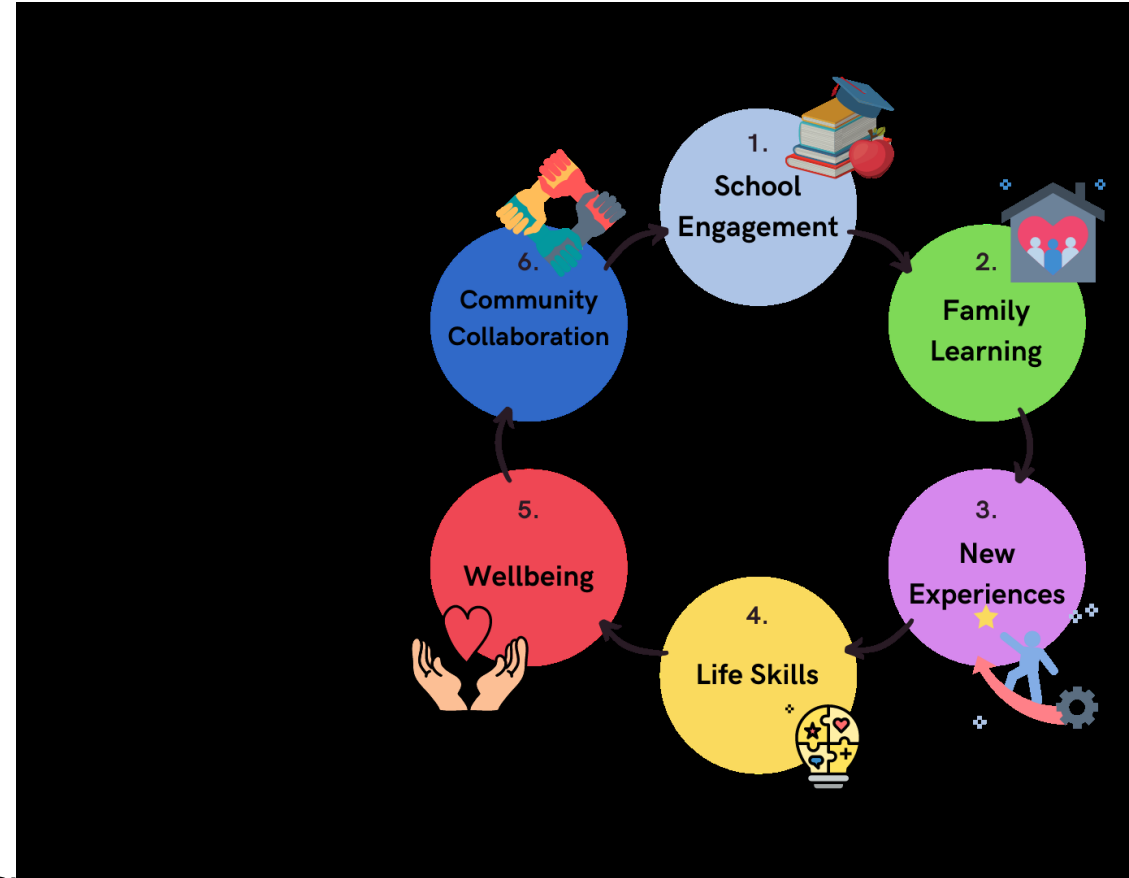


Welcome to Passport to Success

The Passport to Success is an award that has been set up for parents and carers of students at our Trust Schools.

The award was set up and designed to help recognise **outstanding contributions to school, family life and the local community**.

The Passport to Success key priorities are to help enrich children's school experience by providing a range of workshops with a strong emphasis on knowledge, skill and cultural capital.



Booklet

The way we monitor progress and engagement is through our PTS Family Engagement Booklet.

Each family will be given a booklet and every activity/workshop they complete they will earn one stamp.

The more stamps they collect, the greater the reward!

If I achieve:

- 4 stamps** - a selection of Goodies
- 8 stamps** – Voucher
- 12 stamps** - FREE! Family Day Trip

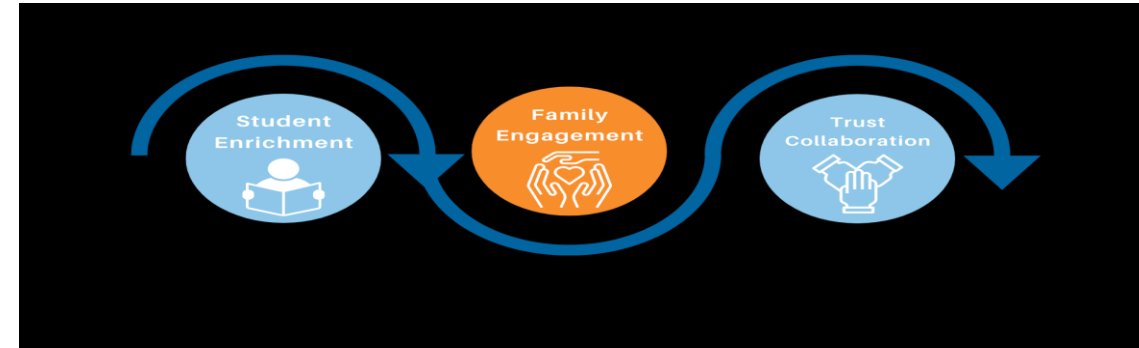


Enrichment update - Passport to Success

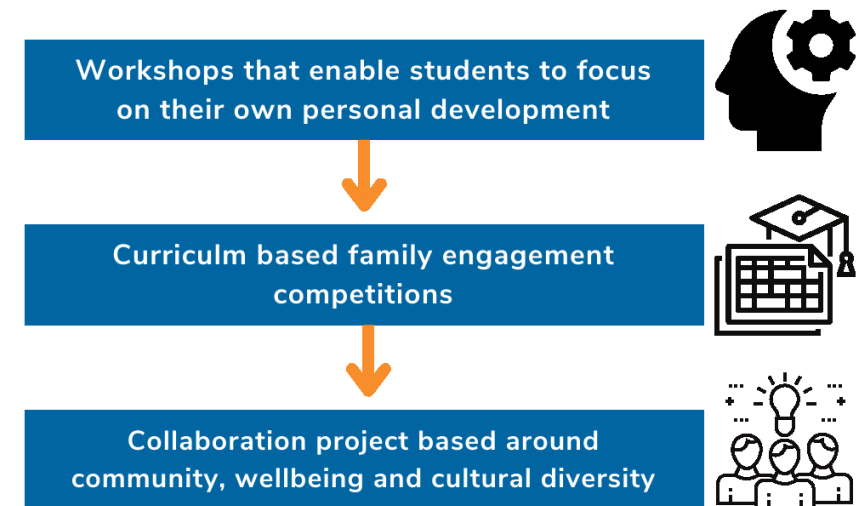
Our Key Principles

We are guided by these key principles:

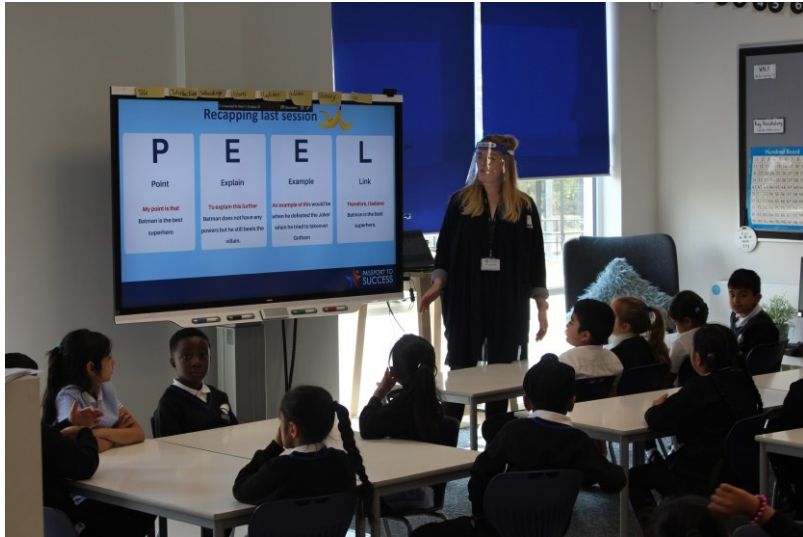
- Working with families and students - together where possible
- Complement the work taking place in the schools - no repetition within the schools
- Different ways of learning - Innovative activities and / or events
- Independent learning - Empowering students and families to work using their own initiative
- Wellbeing - raising aspiration, confidence and supporting each other
- Literacy and numeracy - ability to help them
- Advice and Guidance - Signpost to other services and utilising our partners
- Equality of opportunity - all sections of our school will have access to the opportunities and resources available



Main delivery of Plan Next year



'Developing different ways of learning'



'Innovate, Inspire, Collaborate'



HIPPODROME EDUCATION NETWORK

H BIRMINGHAM
HIPPODROME



Primary School Offer 2021-22



- Dear Santa
 - Romeo & Juliet (dance performance)
 - Beauty and the Beast
 - Create your Commonwealth Games Theme Song
 - Oi Frog & Friends
 - HEN Commonwealth themed Showcase
- ❖ Tickets to shows at Birmingham Hippodrome
 - ❖ Outdoor Festival invitations to families





Support for families

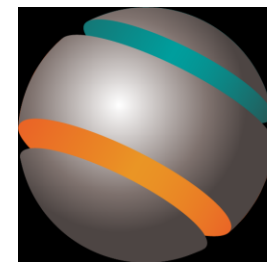
- **Manager Children's Services**
- I successfully led the Local Authority's Fair Access Team and received national recognition for the impact the team had on work **with** schools to support families to improve outcomes for young people
- I have 16 years of experience working **with** people from all walks of life and hope to utilise my skills to make a positive difference
- I look forward to working **with** families and relevant services like the Enrichment Team, to support the
- Trust to further embed its values

Coming up this year...

- Two new schools due to join the Trust:
 - Shireland Biomedical UTC
 - Wednesfield Technology Primary
- Work beginning on Shireland CBSO School and Coseley Technology Primary – both due to open 2023.
- New outdoor facilities for schools to facilitate improved Outdoor Learning
- Passport to Success activities



SHIRELAND
BIOMEDICAL
UNIVERSITY TECHNICAL COLLEGE



WEDNESFIELD
TECHNOLOGY PRIMARY